

## Annexe 1 – Caractéristiques des stations RHP

DR	Dpt	Code BHP	Nom station	Nom du cours d'eau	X (Coordonnées Lambert II)	Y (Coordonnées Lambert II)	Surface du BV (km²)	Distance à la Source (km)	Largeur du cours d'eau (m)	Pente de la station (IGN) (/1000)	Prof. Moy. de la station (m)	Altitude (m)	Strahler corrigé
DR1	2	03020098	Chateau-Thierry	Marne	676492	2448766	8605	354	70.0	0.17	4	60	5
DR1	2	03020099	Vadencourt	Oise	689243	2548619	1140	95	18.0	1.05	0.8	180	4
DR1	2	03020100	St Michel	Gland	728901	2549409	212.5	30	12.0	1.25	0.8	180	4
DR1	2	03020101	Condé-sur-Aisne	Aisne	682672	2489577	7160	278	60.0	0.18	4	40	5
DR1	2	03020103	Bichancourt	Ailette	662883	2508330	540	52	9.0	0.86	0.815	41	4
DR1	2	03020104	Danizy	Serre	676533	2520699	1670	76	15.0	0.2	1.5	50	4
DR1	2	03020105	Villers-sur-Fere	Ourcq	686759	2466771	87.5	18	4.0	3.1	0.575	115	3
DR1	2	03020106	Monthurel	Surmelin	687320	2448212	475	30	8.0	2.3	0.785	70	4
DR3	8	03080002	Hauteville	Vaux	742645	2511460	167.5	27	7.5	3.3	0.68	79	3
DR3	8	03080036	Barby	Aisne	743265	2503877	3145	183	25.0	0.6	1.66	68	5
DR3	8	03080040	Roizy	Retourne	733182	2493357	235	31	10.0	1	0.53	68	2
DR3	8	03080080	Rilly-Sur-Aisne	Aisne	767363	2501908	2800	149	20.0	0.6	1	84	5
DR3	10	03100001	Marnay/Seine	Seine	689507	2391796	8625	235	50.0	0.3	1.85	63	6
DR3	10	03100002	Nogent Sur Seine	Seine	687892	2390750	8775	238	35.0	0.3	2	63	6
DR3	10	03100003	Ervy-le-Chatel	Armanche	718271	2339201	360	20	8.5	0.8	0.83	116	4
DR3	10	03100008	Estissac	Ancre	710955	2361423	92.5	12	3.0	4.4	0.36	144	2
DR3	10	03100009	Bouloges	Aube	716446	2398492	4020	204	30.0	0.3	0.8	76	4
DR3	10	03100015	Montreuil/Barse	Barse	745929	2360552	225	19	5.6	1.8	0.75	123	3
DR3	10	03100026	Courteron	Seine	756966	2337962	742.5	90	25.0	1.5	0.69	174	4
DR3	10	03100030	Epagne	Aube	757375	2379137	1675	131	25.0	0.7	1.07	113	4
DR3	10	03100031	Ramerupt	Puits	746007	2392165	220	26	6.0	0.9	0.33	96	2
DR3	10	03100038	Hampigny	Laines	770290	2386585	140	19	5.0	0.8	0.63	119	3
DR3	10	03100039	Montmorency	Voire	764778	2388375	710	34	18.0	0.5	1.08	112	4
DR3	10	03100046	La Motte-Tilly	Seine	681111	2387043	8970	254	35.0	0.3	0.65	61	6
DR3	10	03100048	Mery/Seine	Seine	715286	2390433	3900	187	30.0	0.2	1	82	5
DR3	10	03100049	Villemoyenne	Seine	740397	2355097	2650	123	30.0	0.8	0.87	126	5
DR3	10	03100050	Celles/Ource	Ource	753600	2345006	755	91	18.0	1.5	0.58	157	4
DR2	14	03140007	Pont-Bellanger	Vire	356469	2443735	485	35	12.0	2	0.47	54	5
DR2	14	03140022	Coupesarte	Vie	437643	2453238	280	29	10.1	3	0.59	40	3
DR2	14	03140079	Truttener-le-Grand	Vire	367313	2425536	7	4.5	2.4	7	0.27	245	1
DR2	14	03140141	Manerbe	Pré d'Auge	441789	2465995	10	5	2.4	12.5	0.32	60	2
DR2	14	03140143	Blangy-le-Chateau	Chaussey	448064	2473931	30	7.7	4.4	6.8	0.54	40	1
DR2	14	03140144	Préville	Touques	447385	2454050	222	42	6.9	3.5	0.75	70	3
DR2	14	03140145	Beaumont	Dives	422786	2436075	290	32	6.0	2.2	0.47	55	3
DR2	14	03140146	Fresney-le-Puceux	Laize	402004	2455904	144	23	5.5	4.2	0.32	21	4
DR2	14	03140148	Lassy	Druance	378823	2440449	59	11	5.1	6	0.36	160	2
DR2	14	03140152	Juaye-Mondaye	Aure	378645	2472588	75	15	5.0	2.8	0.28	55	2
DR2	14	03140159	Clinchamps-sur-Orne	Orne	399444	2459039	2380	146	45.0	0.8	1.25	7	6
DR9	21	03210050	Nod/Seine	Seine	767363	2309350	420	38	14.0	2.1	0.65	248	4
DR9	21	03210052	Vic-sous-Thil	Serein	749027	2265410	205	21	12.0	2.9	0.3	323	3
DR9	21	03210054	Saint-Remy	Brenne	747016	2295190	780	55	18.0	1.4	1.05	200	4
DR9	21	03210061	Orret	Seine	776693	2290530	54	16	6.4	3.74	0.4	330	3

## Annexe 1 – Caractéristiques des stations RHP

DR	Dpt	Code BHP	Nom station	Nom du cours d'eau	X (Coordonnées Lambert II)	Y (Coordonnées Lambert II)	Surface du BV (km²)	Distance à la Source (km)	Largeur du cours d'eau (m)	Pente de la station (IGN) (/1000)	Prof. Moy. de la station (m)	Altitude (m)	Strahler corrigé
DR9	21	03210064	Pont-et-Massène	Armençon	751951	2276690	310	44	15.0	2.23	0.74	270	3
DR1	27	03270025	Radepont	Andelle	526377	2484387	660	46	15.0	2.5	0.725	23	3
DR1	27	03270051	amont Poses	Seine	2479246	2479246	68840	609	100.0	0.1	4	8	7
DR1	27	03270052	aval Poses	Seine	519016	2479811	69590	611	130.0	0.1	3.825	5	7
DR1	27	03270053	Fontaine-sous-Jouy	Eure	524955	2452579	4430	138	25.0	0.7	1.5	33	5
DR1	27	03270054	Normanville	Iton	514216	2451833	980	90	14.5	1.7	0.5	51	3
DR1	27	03270055	Verneuil	Avre	503039	2415749	385	40	13.1	1.3	0.31	143	4
DR1	27	03270056	Fourges	Epte	549390	2458002	1385	80	16.0	0.8	0.87	22	3
DR1	27	03270057	Saint-Philibert-Sur-Risle	Risle	478007	2477441	1770	110	30.0	0.79	0.72	32	4
DR4	28	03280029	Maintenon	Eure	544465	2397642	960	89	12.0	1.1	0.97	101	3
DR4	28	03280030	Manou	Eure	497744	2392828	70	12	6.7	2	0.48	202	3
DR4	28	03280032	St-Ange-de-Torcay	Blaise	517382	2406368	224	24	8.5	2.3	0.4	137	2
DR4	45	03450010	Chateau-Renard	Ouarne	642000	2326000	837.5	58	12.8	0.9	0.475	105	4
DR4	45	03450011	Dammarié/Loing	Loing	640000	2310000	330	38	9.6	2.8	0.61	138	3
DR4	45	03450012	Selle-sur-Bied	Clerf	641000	2340000	225	17	8.9	2	0.72	102	2
DR2	50	03500004	Picauville	Douve	326678	2492535	518	47	25.0	0.1	1.2	1	4
DR2	50	03500020	Hambye	Sienna	334991	2442447	220	35	10.0	2.2	0.23	55	2
DR2	50	03500031	Chêrencé-le-Roussel	See	353131	2417795	86	16	6.5	6.8	0.37	75	3
DR2	50	03500078	Montpinchon	Souilles	331109	2453326	86	22	5.2	3	0.37	45	2
DR2	50	03500112	Le Mesnil-Rogues	Airou	328312	2486430	89	17	6.3	3.8	0.18	45	2
DR2	50	03500113	St Sauveur-Lendelin	Taute	327023	2466373	25	8	3.3	6.4	0.26	35	1
DR2	50	03500124	Romagny	Cance	357738	2409536	37	11	4.7	13.5	0.23	120	2
DR2	50	03500135	Brillevast	Saire	329247	2519160	86	16	6.5	6.8	0.37	75	2
DR2	50	03500140	Tamerville	Gloire	322672	2510996	29	9	4.2	4.1	0.29	50	2
DR2	50	03500144	Sourdeval	See Rousse	332783	2415678	26	6	3.0	12.5	0.2	190	1
DR2	50	03500145	Ducey	Selune	332831	2406464	759	56	20.8	2.2	0.31	13	5
DR3	51	03510007	Montigny	Vesle	704826	2479849	990	89	10.0	0.3	1	65	3
DR3	51	03510009	Velve	Sommessoude	731370	2433778	365	3	6.0	2	0.86	92	2
DR3	51	03510016	St-Rémy-en-Bouzemont	Isson	768214	2408540	87.5	19	5.0	0.9	0.38	106	3
DR3	51	03510022	Dontrien	Suippe	750994	2473081	215	25	8.0	3.5	0.65	105	2
DR3	51	03510033	Chaufontaine	Aisne	785156	2458988	650	61	12.0	0.7	1.16	130	4
DR3	51	03510035	Ablancourt	Marne	760421	2426097	5607.5	214	40.0	0.4	1.61	90	5
DR3	51	03510038	Neuuy	Grand Morin	686335	2417310	227.5	29	5.5	1.4	1.3	142	3
DR3	51	03510039	Vitry-en-Perthois	Saulx	767251	2418433	2182.5	108	25.0	1	0.96	97	4
DR3	51	03510040	Pleurs	Superbe	712993	2410310	335	28	10.0	1.4	0.56	89	3
DR3	51	03510042	Mareuil / Ay	Marne	723178	2451059	7462.5	289	30.0	0.1	1.95	70	5
DR3	51	03510058	Mareuil-le-Port	Marne	703934	2454996	7760	316	50.0	0.1	2.4	65	5
DR3	51	03510060	Prunay	Vesle	734222	2467499	580	58	12.0	0.5	0.96	98	3
DR3	51	03510061	Boult-sur-Suippe	Suippe	730727	2487850	690	53	10.0	0.8	0.68	71	3
DR3	51	03510066	Matougues	Marne	739086	2448762	6527.5	261	45.0	0.1	2.2	76	5
DR3	52	03520005	La Ferte/Aube	Aube	782435	2347747	600	64	10.5	1.5	0.62	199	3

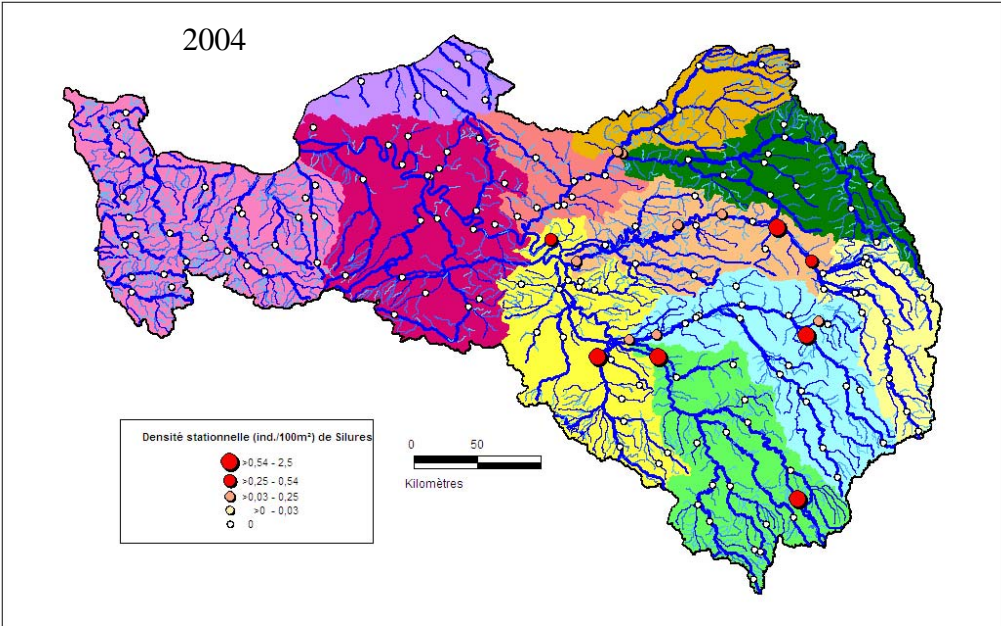
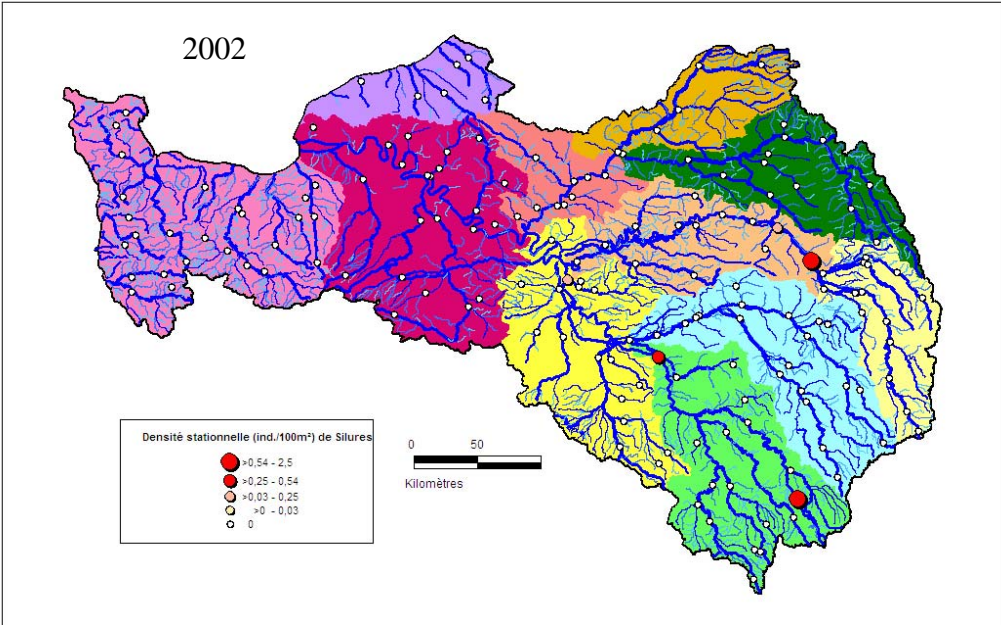
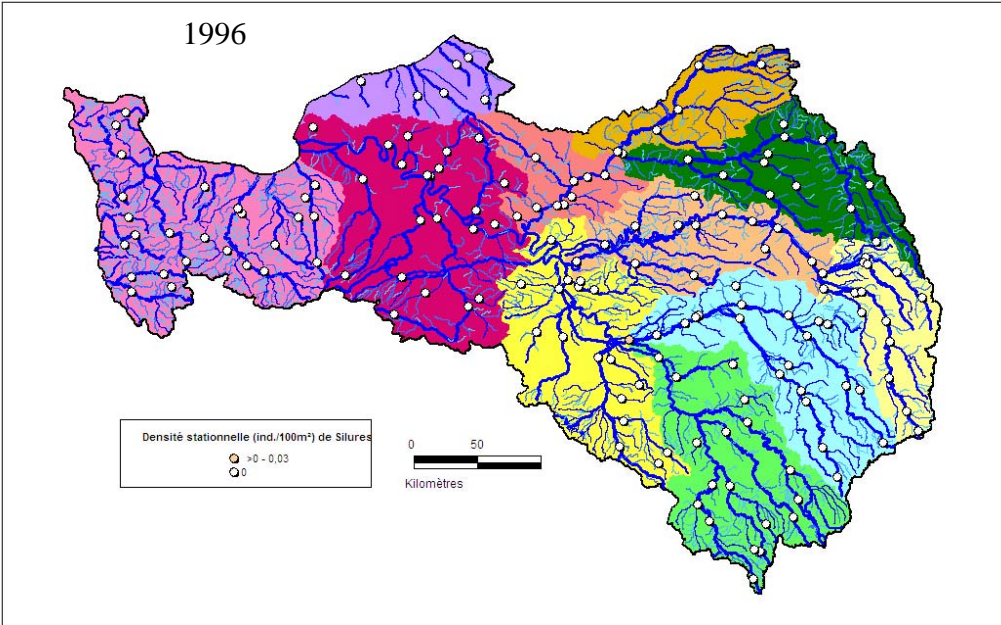
Annexe 1 – Caractéristiques des stations RHP

DR	Dpt	Code BHP	Nom station	Nom du cours d'eau	X (Coordonnées Lambert II)	Y (Coordonnées Lambert II)	Surface du BV (km²)	Distance à la Source (km)	Largeur du cours d'eau (m)	Pente de la station (IGN) (/1000)	Prof. Moy. de la station (m)	Altitude (m)	Strahler corrigé
DR3	52	03520007	Pont-la-Ville	Aujon	790476	2345610	312.5	41	9.8	2	0.4	213	2
DR3	52	03520015	Wassy	Blaise	791710	2393796	447.5	58	12.0	2	0.7	159	3
DR3	52	03520021	Auberive	Aube	805673	2312340	45	6	5.2	4.4	0.29	340	2
DR3	52	03520027	Balesmes-sur-Marne	Marne	827537	2319761	20	4	4.0	5	0.66	345	2
DR3	52	03520034	Condes	Marne	809415	2353021	880	55	23.0	1.3	0.69	248	4
DR3	52	03520055	Saint Dizier	Marne	791792	2406939	2440	144	25.0	0.4	0.86	130	5
DR3	52	03520069	Rolampont	Marne	820379	2331948	307.5	21	12.0	1.3	0.76	300	4
DR3	52	03520070	Saucourt/Rognon	Rognon	809656	2375518	680	70	18.0	1.8	0.69	210	4
DR3	52	03520071	Vecqueville	Marne	807150	2388250	2112.5	113	20.0	1	0.56	180	5
DR3	52	03520073	Moeslains	Marne	787886	2405848	2455	153	30.0	0.4	1.2	130	5
DR3	55	03550004	Revigny/Ormain	Ormain	794357	2428422	905	77	25.0	1.6	0.765	143	3
DR3	55	03550005	Confrisson	Saulx	793332	2425170	512.5	67	15.0	1.7	0.73	142	3
DR3	55	03550007	Varennnes en Argo.	Aire	796620	2473646	640	86	15.0	1.8	0.85	155	4
DR3	55	03550040	Demanges-aux-Eaux	Ormain	829735	2403375	345	15	6.0	1.8	1.02	271	3
DR3	55	03550041	Silmont	Ormain	813933	2418799	745	59	20.0	2	1.7	202	3
DR3	55	03550050	Vaubecourt	Aisne	801134	2438290	55	11	5.2	1.8	0.24	184	2
DR3	55	03550066	Mogneville	Saulx	795725	2424077	535	71	15.0	2	0.73	142	2
DR9	58	03580001	Montsauche	Cure	728269	2244310	480	15	7.3	5	0.468	542	3
DR9	58	03580002	Cuzy	Yonne	696261	2263240	745	67	19.0	1.4	0.54	165	4
DR9	58	03580003	Clamecy	Beurreon	688810	2273610	60	39	11.2	2.1	0.54	149	4
DR9	58	03580009	Saint-Agnan	Cousin	731529	2261430	60	15	5.8	4.72	0.52	500	2
DR9	58	03580010	Arleuf	Yonne	723948	2226700	50	10	5.8	11.55	0.25	430	3
DR9	58	03580011	Ouroux-en-Morvan	Chalaux	724386	2245020	16	7	3.2	11.51	0.33	470	1
DR1	60	03600117	Le Francport	Aisne	641370	2493073	7885	330	50.0	0.18	3.96	32	5
DR1	60	03600118	Janville	Oise	638467	2494790	4745	225	40.0	0.13	4	33	5
DR1	60	03600119	Pont-Ste-Maxence	Oise	619666	2478482	13645	260	70.0	0.129	4	29	6
DR1	60	03600120	Chantilly	Nonette	609345	2466396	415	37	10.0	1.57	0.69	40	3
DR1	60	03600121	Chaumont-en-Vexin	Troesne	566987	2474677	187.5	22	7.8	0.8	0.6	64	2
DR1	60	03600122	Theridonne	Therain	586730	2491162	845	45	12.0	0.8	0.54	56	4
DR1	60	03600123	Saintines	Autonne	630605	2479543	302.5	25	7.0	1.7	0.62	34	3
DR1	60	03601123	Villers-St-Paul	Brèche	610756	2476255	460	40	7.0	1.12	0.51	29	3
DR2	61	03610015	St-Evroult-de-Monfort	Touques	449347	2425420	70	13	6.5	3.8	0.42	174	3
DR2	61	03610019	Berjou	Noireau	392782	2432574	515	28	11.4	2.2	0.324	65	5
DR2	61	03610038	Ste-Croix/Orme	Fontaine au heron	405395	2423450	11	4	3.0	14	0.24	150	1
DR2	61	03610166	Aube	Risle	467200	2417383	115	17	6.9	2.2	0.38	215	3
DR2	61	03610179	Montgaroult	Orne	416065	2419600	545	53	22.0	0.4	1.23	143	5
DR1	76	03760070	Malauay	Cailly	506494	2504314	72.5	17	8.0	7.2	0.7	43	2
DR1	76	03760071	Haudricourt	ru d'Haudricourt	555021	2526951	35	4	3.2	5.7	0.41	140	1
DR1	76	03760072	Isembertheville	Béthune	528973	2531131	250	25	8.0	1.4	0.65	57	3
DR1	76	03760073	Villy-Le-Bas	Yeres	537431	2549019	175	20	8.3	2.5	0.56	56	2
DR1	76	03760074	Notre-Dame-du-Parc	Scie	512517	2529699	112.5	13	8.1	4.5	0.47	75	1

## Annexe 1 – Caractéristiques des stations RHP

DR	Dpt	Code BHP	Nom station	Nom du cours d'eau	X (Coordonnées Lambert II)	Y (Coordonnées Lambert II)	Surface du BV (km²)	Distance à la Source (km)	Largeur du cours d'eau (m)	Pente de la station (‰)	Prof. Moy. de la station (m)	Altitude (m)	Strahler corrigé
DR1	76	03760075	Epouville	Lezarde	446942	2510029	62.5	4	5.4	2	0.312	25	1
DR1	76	03760076	Paluel	Durdent	476853	2538591	372.5	22	12.0	0.3	1	1	1
DR1	76	03760077	Dampierre	Maisangueville	551594	2503260	52.5	7	6.0	1.2	0.77	102	3
DR1	76	03760078	Vascoeuil	Andelle	530780	2494723	352.5	27	10.0	2.15	0.89	56	3
DR1	76	03760101	Val de la Haye	Seine	502843	2486559	70390	663	250.0	0.128	4	5	7
DR1	77	03770094	Grizy-Suisnes	Yerres	623800	247753	815	50	10.0	0.5	0.68	59	4
DR1	77	03770095	Montereau	Seine	645979	2376827	21500	305	125.0	0.06	4	47	6
DR1	77	03770097	Moncourt-Fromonville	Loing	626483	2365930	3607.5	109	30.0	0.48	1.22	57	5
DR1	77	03770099	Pommeuse	Grand Morin	649824	2424710	795	85	15.0	0.63	1.04	65	4
DR1	77	03770100	Lizy/Ourcq	Ourcq	649380	2447616	1110	67	11.0	0.42	1.5	49	4
DR1	77	03770101	Jablins	Marne	630337	2436214	12307.5	454	50.0	0.085	3	41	5
DR1	77	03770102	Treuzy	Lunain	634119	2364350	225	12	6.0	2.09	0.34	70	2
DR1	78	03780026	Chevreuse	Yvette	577871	2411855	92.5	11	10.0	1.47	1	80	3
DR1	78	03780027	Mericourt	Seine	547571	2445797	65805	526	200.0	0.1	5	18	7
DR1	78	03780029	Sailly	Montcient	561280	2448909	7.5	2	3.0	6.7	0.2	82	1
DR1	78	03780034	Boulard	Guesle	551497	2402593	62.5	15	2.7	2.35	0.26	120	1
DR9	89	03890005	Tronchoy	Armençon	719837	2324920	1970	140	28.0	0.8	1.28	130	5
DR9	89	03890026	La Chapelle	Serein	706626	2319160	1205	145	8.6	1.5	0.6	130	3
DR9	89	03890027	Pont-sur-Yonne	Yonne	664548	2365770	11436.5	223	74.0	0.1	2	63	6
DR9	89	03890031	Malay-le-Grand	Yonne	675622	2353080	922.5	50	15.0	2.3	0.5	80	3
DR9	89	03890032	Toucy	Ouanne	669833	2306150	157.5	15	5.0	1.9	0.7	195	3
DR9	89	03890132	DOMATS	BETZ	652065	2348221	20	7	2.5	1	0.2	149	1
DR9	89	03890133	MEZILLES	BRANLIN	664240	2299220	80	14	5.0	1	0.6	220	2
DR9	89	03890134	MERRY (secteur non navigué)	YONNE	698093	2286089	1790	120	45.0	1.2	1	130	5
DR9	89	03890135	ST GEORGES	BAULCHES	688339	2312157	127	16	2.5	2	0.3	107	3
DR9	89	03890137	MERRY (secteur navigué)	YONNE	698288	2285983	1790	120	50.0	1.2	1.5	132	5
DR9	89	03890167	VOUTENAY	CURE	708985	2285392	1130	86	35.0	4	0.5	120	4
DR1	91	03910036	Viry-Chatillon	Orge	601659	2408469	900	89	13.0	0.49	1	36	4
DR1	91	03910100	Boussy-St-Antoine	Yerres	614095	2409887	890	155	13.0	0.8	1.5	42	4
DR1	91	03910102	Maisse	Essonne	603871	2378625	1075	56	14.0	0.93	1.2	61	3
DR1	91	03910103	Savigny sur Orge	Orge	601892	2408774	955	90	13.0	0.49	0.904	36	4
DR1	91	03910109	Etampes	Juine	587503	2381894	212.5	20	6.0	0.95	0.7	69	2
DR1	93	03930065	Epinay	Seine	596796	2439254	45980	440	165.0	0.08	4.5	23	7
DR1	94	03940069	Villeneuve-St-Georges	Seine	606953	2413928	32400	390	120.0	0.2	4.5	37	7
DR1	94	03940070	Bry sur Marne	Marne	612691	2425740	12570	490	75.0	0.205	3	37	5
DR1	94	03940072	Villectresne	Réveillon	615203	2413561	145	8	5.0	2.1	0.8	53	2
DR1	95	03950037	Nesles-la-Vallée	Sausseron	587520	2459481	132.5	13	4.7	1.56	0.54	38	3
DR1	95	03950039	Asnières-sur-Oise	Thève	604489	2461384	117.5	26	5.0	0.8	0.32	33	2
DR1	95	03950040	Boran	Oise	600414	2460950	16520	291	80.0	0.2	3	27	6
DR1	95	03950041	Montgeroult	Viosne	575039	2453987	97.5	17	6.0	1.57	1.07	44	2

Annexe 2 – Evolution de la population de silure dans le bassin Seine-Normandie  
(1996-2002-2004)







## Annexe 2 – IPR des stations de Seine-Normandie de 1995 à 2004

DR	Code BHP	Nom station	Nom du cours d'eau	1995	1996	1997	1998	1999	2000	2001	2002	2003	2004
DR1	03760078	Vascoeuil	Andelle	7.67	8.49	9.64	9.38	7.67					
DR1	03760101	Val de la Haye	Seine		21.20	19.33	49.46	10.49	51.08	29.88	34.31	27.93	26.19
DR1	03770094	Grizy-Suisnes	Yerres	28.97	21.58	23.46	25.53	24.65	22.98	28.32	37.18	33.68	
DR1	03770095	Montereau	Seine	11.20	14.28	13.45	11.95	17.91	12.59	12.52	13.11	22.40	5.64
DR1	03770097	Moncourt-Fromonville	Loing	10.87	15.35	15.25	20.87	11.96	12.57	6.26	5.33	14.21	25.59
DR1	03770099	Pommeuse	Grand Morin	17.80	14.35	11.44	14.94	20.73	11.41	14.11	18.10	19.54	13.82
DR1	03770100	Lizy/Ourcq	Ourcq	18.78	19.32	17.13	14.74	23.33	20.25	20.30	13.95	22.53	19.82
DR1	03770101	Jablins	Marne	38.99	41.07	9.12	13.46	10.68	9.55	16.39	30.14	29.97	14.39
DR1	03770102	Treuzy	Lunain	15.40	15.07	14.75	13.78	14.04	31.10	10.74	9.30	9.20	8.21
DR1	03780026	Chevreuse	Yvette	34.33	29.14	40.55	41.14	30.32	25.59	29.42	33.51	29.78	31.37
DR1	03780027	Mericourt	Seine	24.94	17.29	29.44	38.33	12.73	47.83	24.35	44.11	41.34	26.45
DR1	03780029	Sailly	Montcient	37.46	24.70	60.33	26.99	46.23	49.35	21.67	21.06	24.89	24.46
DR1	03780034	Boulard	Guesle	25.87	26.70	31.46	27.67	29.95	25.79	17.92	19.36	24.42	21.59
DR9	03890005	Tronchoy	Armençon	27.49	26.18	40.83	26.14		11.00	18.21	20.88	14.71	17.09
DR9	03890026	La Chapelle	Serein	21.59	19.79	21.34	20.58		10.61	18.45	15.29	14.46	12.86
DR9	03890027	Pont-sur-Yonne	Yonne	13.95	22.45	31.35	31.30		25.55	20.47	20.51	10.70	9.76
DR9	03890031	Malay-le-Grand	Vanne	7.54	10.00	18.08	5.41		8.85	15.07	7.40	11.59	16.06
DR9	03890032	Toucy	Ouanne	31.99	22.74	19.35	13.32		18.63	14.68	25.41	17.16	15.95
DR9	03890132	DOMATS	BETZ							14.90	12.57	13.69	21.33
DR9	03890133	MEZILLES	BRANLIN							13.78	11.61	14.08	19.60
DR9	03890134	MERRY (secteur non navigué)	YONNE							22.27	18.12	17.89	19.68
DR9	03890135	ST GEORGES	BAULCHES							20.41	25.57	23.42	15.57
DR9	03890137	MERRY (secteur navigué)	YONNE							17.77	16.55	31.32	23.14
DR9	03890167	VOUTENAY	CURE									19.54	22.51
DR1	03910036	Viry-Chatillon	Orge						29.92	21.67	30.57	28.90	25.90
DR1	03910100	Boussy-St-Antoine	Yerres	20.02	23.17	25.26	18.86	17.19	27.04	10.34	12.12	10.66	14.73
DR1	03910102	Maisse	Essonne	14.45	15.66	12.85	15.68	11.83	12.38	12.39	11.72	20.72	22.89
DR1	03910103	Savigny sur Orge	Orge	22.59	28.13	26.83	30.43	26.88					
DR1	03910109	Étampes	Juïne	27.57	25.77	27.85	35.53	19.86	19.90	20.50	15.38	15.11	16.19
DR1	03930065	Epinay	Seine	29.93	16.02	42.28	34.09	13.52	19.57	10.04	29.32	28.93	12.88
DR1	03940069	Villeneuve-St-Georges	Seine	7.40	11.38	15.84	10.76	7.95	15.35	13.28	25.16	10.01	21.79
DR1	03940070	Bry sur Marne	Marne	20.39	21.09	28.22	21.17	26.26	20.21	20.35	31.32	11.88	17.99
DR1	03940072	Villecresne	Réveillon	35.92	39.52	32.83	33.63	37.93	28.25	29.34	39.31	33.55	33.18
DR1	03950037	Nesles-la-Vallée	Sausseron	14.16	14.14	15.47	11.57	13.27	23.20	17.86	22.05	14.18	18.64
DR1	03950039	Asnière-sur-Oise	Thève	15.52	23.67	20.87	17.11	16.28	29.13	16.80	18.22	24.62	24.32
DR1	03950040	Boran	Oise	20.26	23.03	16.81	25.09	8.65	14.80	19.12	12.84	16.02	12.10
DR1	03950041	Montgeroult	Viosne	19.15	21.29	20.84	20.37	21.04	15.85	23.56	33.48	25.24	17.91